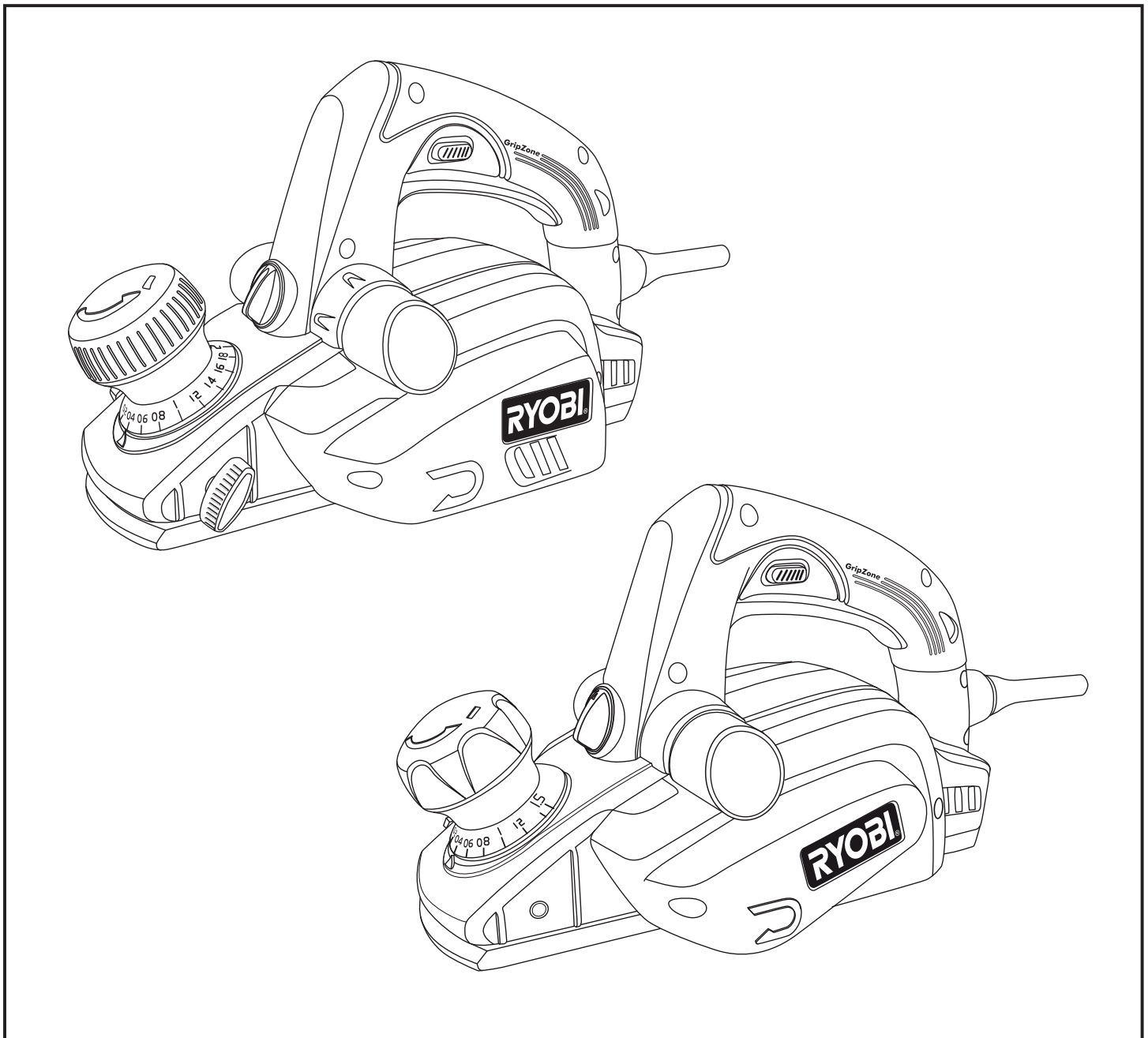




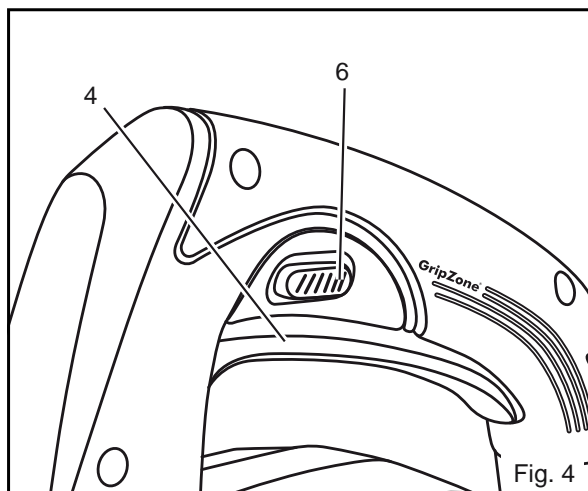
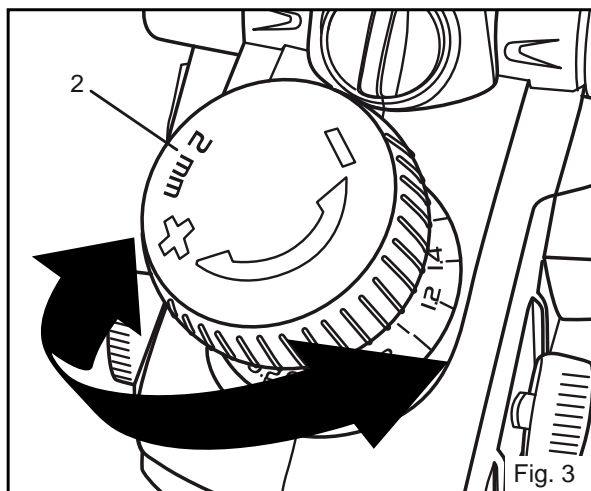
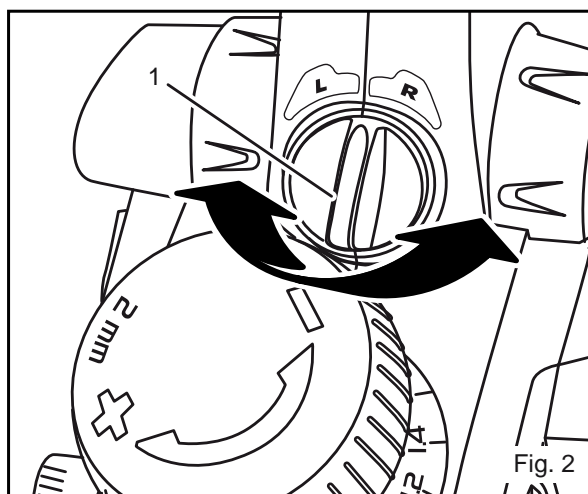
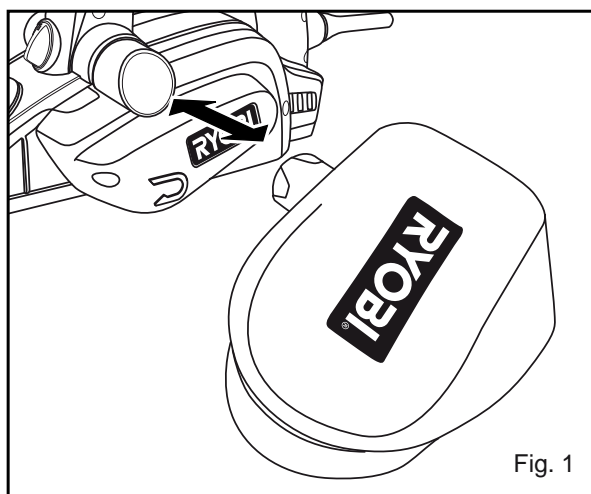
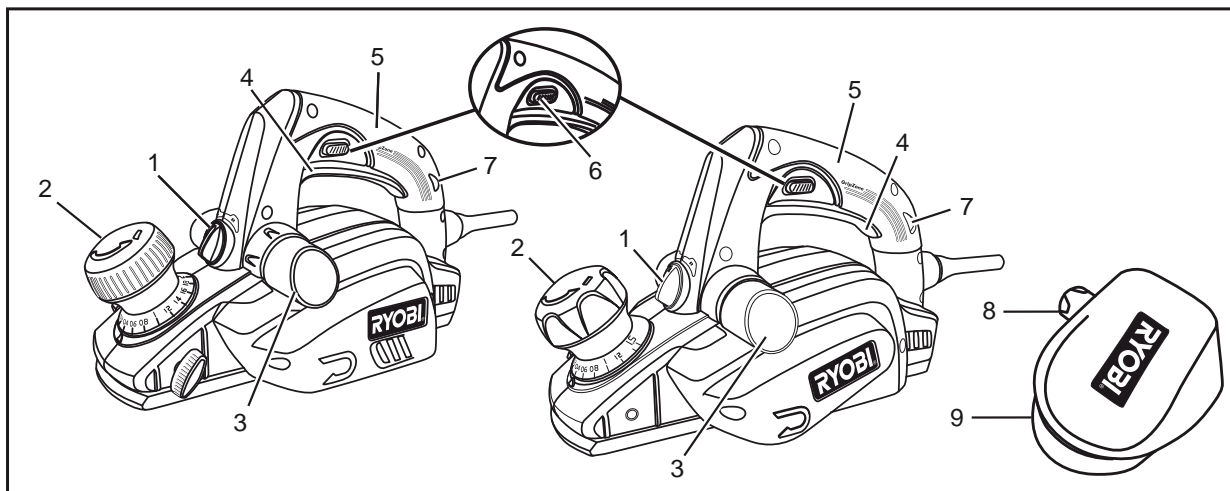
ERP6582RG / ERP6582
ERP7582RG / ERP7582K

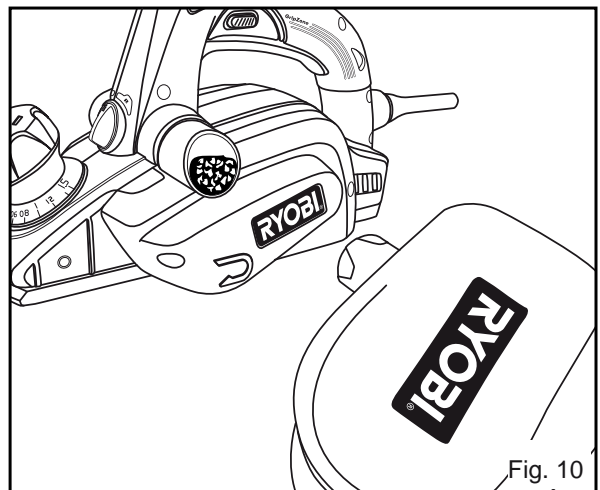
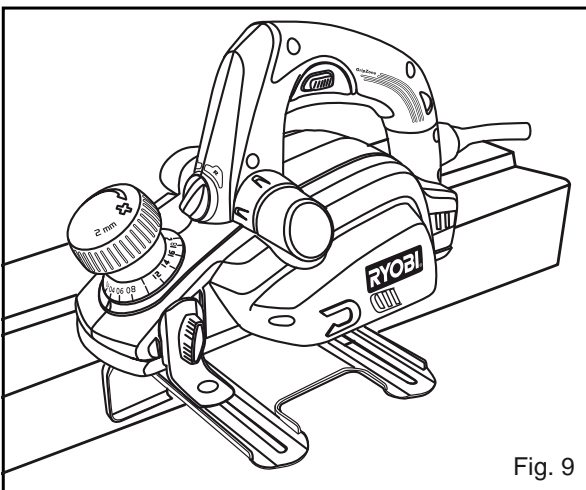
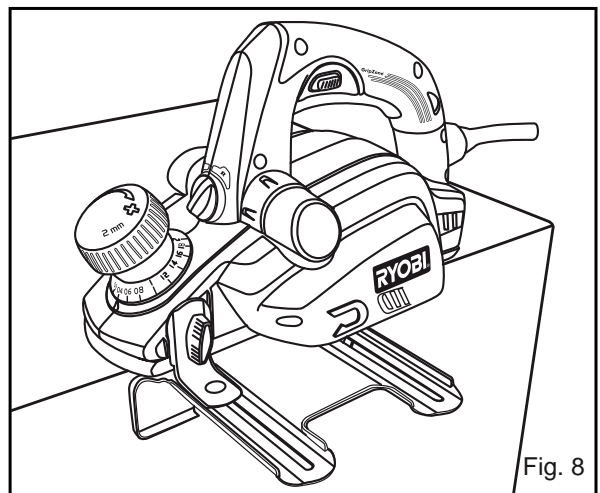
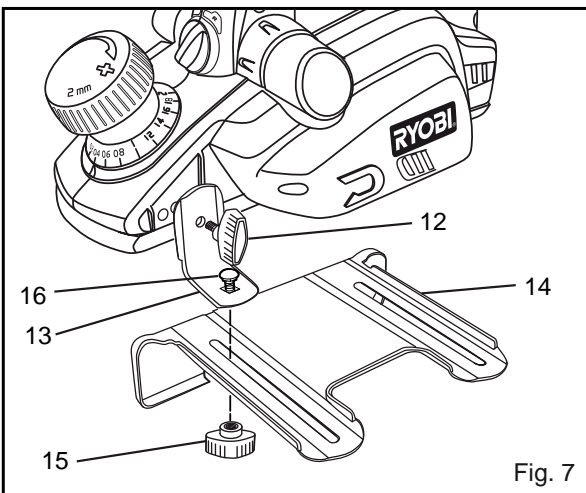
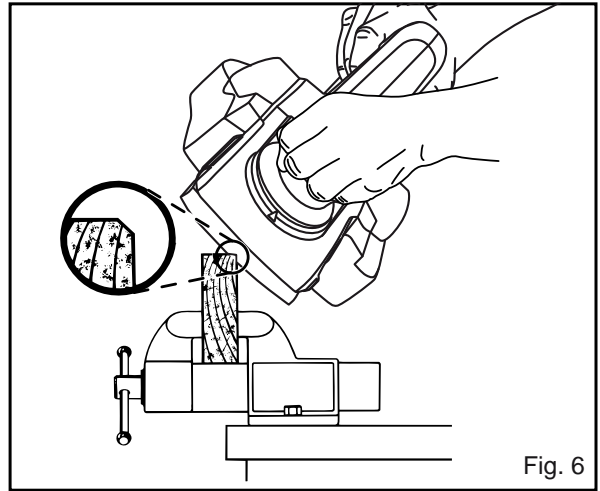
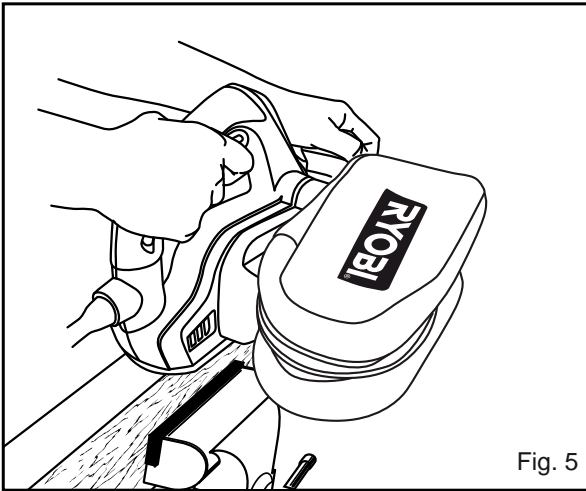
PLANER
OWNER'S OPERATING MANUAL

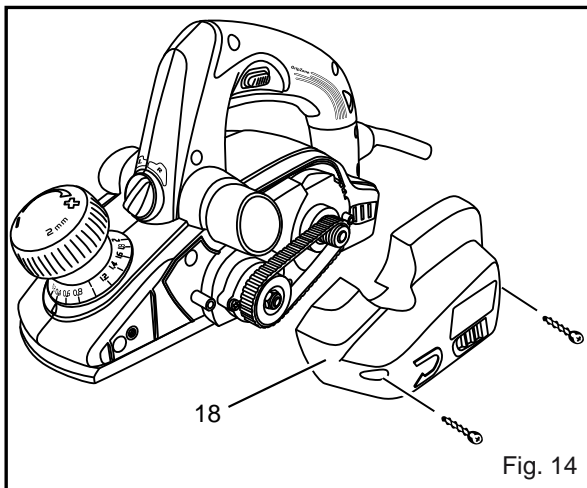
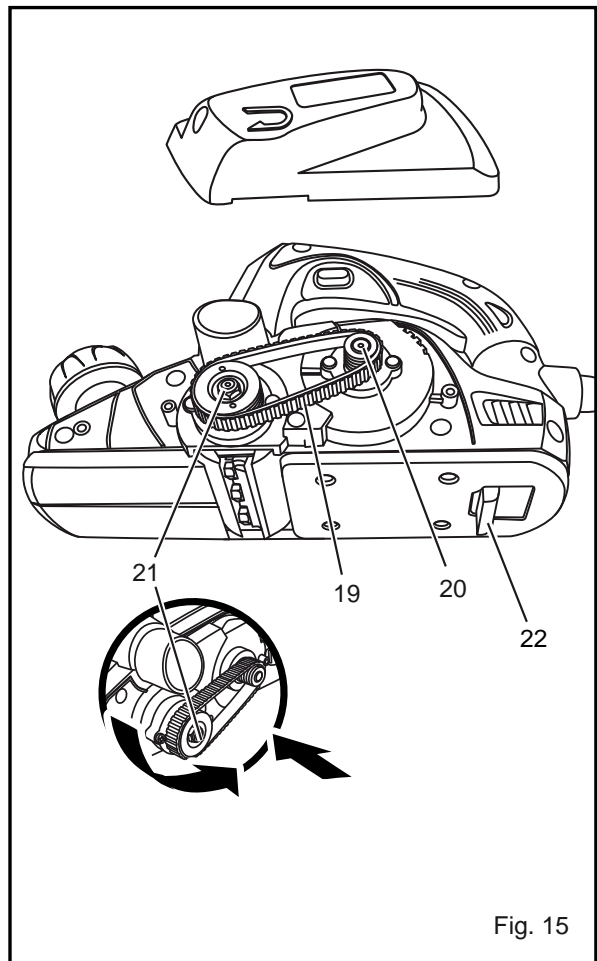
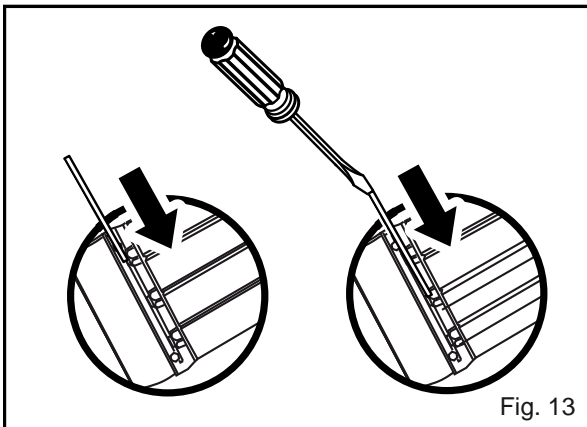
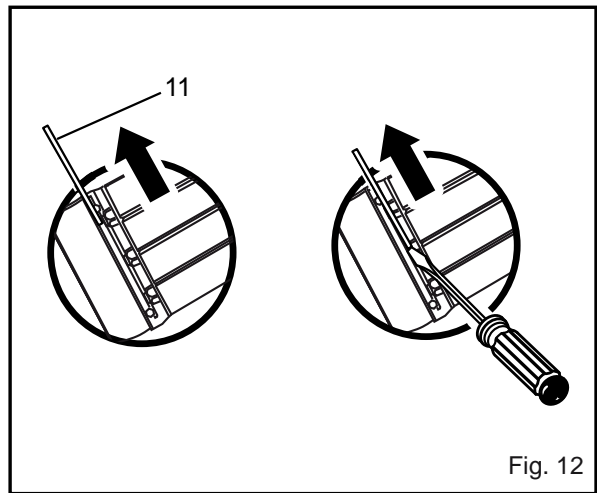
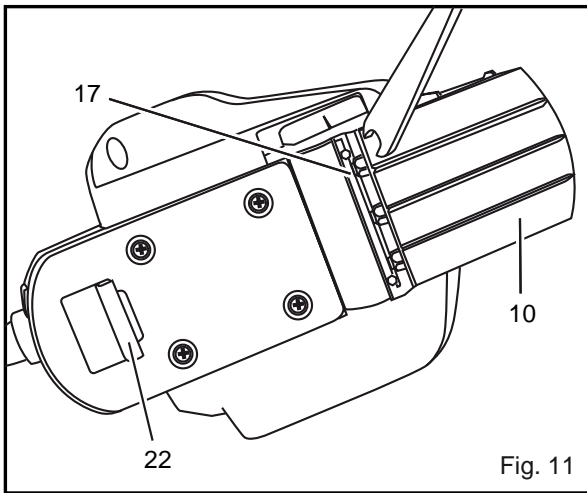


DESCRIPTION

- | | | |
|---|--|--|
| <ol style="list-style-type: none"> 1. Dust direction knob 2. Depth adjustment knob/auxiliary handle 3. Dust port 4. Trigger switch 5. Main handle 6. Lock-off button 7. Live tool indicator 8. Collar | <ol style="list-style-type: none"> 9. Dust bag 10. Front shoe 11. Blade 12. Knob bolt 13. Bracket 14. Edge guide 15. Knob nut 16. Carriage head bolt | <ol style="list-style-type: none"> 17. Blade holder 18. Belt cover 19. Belt 20. Small pulley 21. Large pulley 22. Tool stand |
|---|--|--|







Important!

It is essential that you read the instructions in this manual before operating this machine.

Subject to technical modifications.

GENERAL POWER TOOL SAFETY WARNINGS

WARNING

Read all safety warnings and all instructions. Failure to follow the warnings and instructions may result in electric shock, fire and/or serious injury.

Save all warnings and instructions for future reference.

The term “power tool” in the warnings refers to your mains-operated (corded) power tool or battery-operated (cordless) power tool.

1. WORK AREA SAFETY

- a. **Keep work area clean and well lit.** Cluttered or dark areas invite accidents.
- b. **Do not operate power tools in explosive atmospheres, such as in the presence of flammable liquids, gases, or dust.** Power tools create sparks which may ignite the dust or fumes.
- c. **Keep children and bystanders away while operating a power tool.** Distractions can cause you to lose control.

2. ELECTRICAL SAFETY

- a. **Power tool plugs must match the outlet. Never modify the plug in any way. Do not use any adaptor plugs with earthed (grounded) power tools.** Unmodified plugs and matching outlets will reduce risk of electric shock.
- b. **Avoid body contact with earthed or grounded surfaces such as pipes, radiators, ranges and refrigerators.** There is an increased risk of electric shock if your body is earthed or grounded.
- c. **Do not expose power tools to rain or wet conditions.** Water entering a power tool will increase the risk of electric shock.
- d. **Do not abuse the cord. Never use the cord for carrying, pulling or unplugging the power tool. Keep cord away from heat, oil, sharp edges or moving parts.** Damaged or entangled cords increase the risk of electric shock.
- e. **When operating a power tool outdoors, use an extension cord suitable for outdoor use.** Use of a cord suitable for outdoor use reduces the risk of electric shock.
- f. **If operating power tools in a damp location is unavoidable, use a residual current device (RCD) protected supply.** Use of an RCD reduces the risk of electric shock.

3. PERSONAL SAFETY

- a. **Stay alert, watch what you are doing and use common sense when operating a power tool. Do not use a power tool while you are tired or under the influence of drugs, alcohol or medication.** A moment of inattention while

operating power tools may result in serious personal injury.

- b. **Use personal protective equipment. Always wear eye protection.** Protective equipment such as dust mask, non-skid safety shoes, hard hat, or hearing protection used for appropriate conditions will reduce personal injuries.
- c. **Prevent unintentional starting. Ensure the switch is in the off-position before connecting to power source and/or battery pack, picking up or carrying the tool.** Carrying power tools with your finger on the switch or energising power tools that have the switch on invites accidents.
- d. **Remove any adjusting key or wrench before turning the power tool on.** A wrench or a key left attached to a rotating part of the power tool may result in personal injury.
- e. **Do not overreach. Keep proper footing and balance at all times.** This enables better control of the power tool in unexpected situations.
- f. **Dress properly. Do not wear loose clothing or jewellery. Keep your hair, clothing and gloves away from moving parts.** Loose clothes, jewellery or long hair can be caught in moving parts.
- g. **If devices are provided for the connection of dust extraction and collection facilities, ensure these are connected and properly used.** Use of dust collection can reduce dust-related hazards.

4. POWER TOOL USE AND CARE

- a. **Do not force the power tool. Use the correct power tool for your application.** The correct power tool will do the job better and safer at the rate for which it was designed.
- b. **Do not use the power tool if the switch does not turn it on and off.** Any power tool that can not be controlled with the switch is dangerous and must be repaired.
- c. **Disconnect the plug from the power source and/or the battery pack from the power tool before making any adjustments, changing accessories, or storing power tools.** Such preventive safety measures reduce the risk of starting the power tool accidentally.
- d. **Store idle power tools out of the reach of children and do not allow persons unfamiliar with the power tool or these instructions to operate the power tool.** Power tools are dangerous in the hands of untrained users.
- e. **Maintain power tools. Check for misalignment or binding of moving parts, breakage of parts and any other condition that may affect the power tools operation. If damaged, have the power tool repaired before use.** Many accidents are caused by poorly maintained power tools.
- f. **Keep cutting tools sharp and clean.** Properly maintained cutting tools with sharp cutting edges are less likely to bind and are easier to control.

- g. Use the power tool, accessories and tool bits etc., in accordance with these instructions and in the manner intended for the particular type of power tool, taking into account the working conditions and the work to be performed. Use of the power tool for operations different from intended could result in a hazardous situation.

5. SERVICE

- a. Have your power tool serviced by a qualified repair person using only identical replacement parts. This will ensure that the safety of the power tool is maintained.

SPECIAL SAFETY RULES

- **Wait for the cutter to stop before setting the tool down.** An exposed cutter may engage the surface leading to possible loss of control and serious injury.
- **This product is not intended for use by persons (including children) with reduced physical, sensory or mental capabilities, or lack of experience and knowledge, unless they have been given supervision or instruction concerning use of the product by a person responsible for their safety. Children should be supervised to ensure that they do not play with the product.**
- **Keep children and visitors away.** Visitors should wear safety glasses and be kept at a safe distance from work area. Do not let visitors come in contact with the tool or the extension cord.
- **Complies with AS/NZS 60745.**
- It is recommended that this tool always be supplied via a residual current device with a rated residual current of 30mA or less.

SYMBOL



Safety Alert

V Volts

Hz Hertz

~ Alternating Current

W Watts

n_0 No-load speed

min^{-1} Revolutions or reciprocations per minute



Regulatory Compliance Mark (RCM). Product meets applicable regulatory requirements.



Double insulation



Wear ear protection



Wear eye protection



Please read the instructions carefully before starting the product.



Waste electrical products should not be disposed of with household waste. Please recycle where facilities exist. Check with your Local Authority or retailer for recycling advice.

SPECIFICATIONS

Model	ERP6582RG / ERP6582	ERP7582RG / ERP7582K
Input	240 V ~ 50 Hz	240 V ~ 50 Hz
Wattage	650 W	750 W
No-load speed	16000 min^{-1}	16000 min^{-1}
Max. planing depth	1.5 mm	2.0 mm
Max. planing width	82 mm	82 mm
Max. rebate depth	8 mm	12 mm
Weight	3.1 kg	3.2 kg

FEATURES

⚠ WARNING

If any parts are missing, do not operate your tool until the missing parts are replaced. Failure to do so could result in possible serious personal injury.

KNOW YOUR PLANER

Before attempting to operate your tool, familiarise yourself with all operating features and safety requirements. However, do not let familiarity with the tool make you careless.

Your tool is compact and lightweight. It is equipped with the following features:

SWITCH

The tool has a conveniently located trigger switch.

LOCK-OFF

The lock-off button locks the trigger switch in the OFF position when the trigger switch is released.

⚠ WARNING

Do not allow familiarity with your tool to make you careless. Remember that a careless fraction of a second is sufficient to inflict severe injury.

DEPTH ADJUSTMENT

Adjust the planing depth from 0 to 1.5 mm (ERP6582RG / ERP6582) / 2.0 mm (ERP7582RG / ERP7582K) in 0.2 mm increments until the last step meets to the maximum depth of 1.5 mm (ERP6582RG / ERP6582) / 2.0 mm (ERP7582RG / ERP7582K).

TOOL STAND

See Figure 15.

The tool stand is used when the tool is not in use, it keeps the blade up and away from the bench or timber that is about to be planed.

EDGE/REBATE GUIDE

The edge guide included allows you to plane edges and make rebate cuts.

DUST BAG

The dust bag attaches to the tool and helps keep the work area free of dust and debris.

ADJUSTMENTS

⚠ WARNING

The power tool should never be connected to the power supply when assembling parts, making adjustments, cleaning, performing maintenance or when the tool is not in use. Disconnecting the tool prevents accidental starting that could cause serious injury.

ATTACHING THE DUST BAG

See Figure 1.

1. Unplug the tool.
2. Slide the collar of the dust bag on to the dust port.

NOTE: To remove the dust bag, pull it straight out of the dust port.

⚠ CAUTION

The dust bag fills quickly. Empty it often to prevent damage to the product.

ADJUSTING THE DUST DIRECTION

See Figure 2.

Control the direction of debris when working in confined areas. Change the direction of the dust to either the right or left.

1. Unplug the tool.
2. Adjust the dust direction and dust bag:
 - To adjust dust to the right, move the dust direction knob to the right and install the dust bag on the right dust port.
 - To adjust dust to the left, move the dust direction

knob to the left and install the dust bag on the left dust port.

ADJUSTING THE PLANING DEPTH

See Figure 3.

Always work from a rough cut to a finish cut. The approximate setting for rough planing is 0.8 mm. For finish planing, use a setting of approximately 0.4 mm. Make test cuts in scrap wood after each adjustment to make sure that the planer is removing the desired amount of wood.

1. Unplug the planer.
2. Turn the depth adjustment knob to the desired setting.

NOTE: To protect the blades during storage, transporting etc., set the depth adjustment to 0.

OPERATION

⚠ WARNING

Wait for the tool to stop before setting the tool down. An exposed tool may engage the surface leading to possible loss of control and serious injury.

STARTING/STOPPING THE PLANER

See Figure 4.

- To start the planer, push the lock-off button and then depress the trigger switch.
- To stop the planer-release the trigger switch.

NOTE: The ERP7582RG / ERP7582K is fitted with a feature known as soft start, this feature is electronically controlled and delays the start up of the motor and blades.

PLANING

See Figure 5.

1. Clamp the workpiece securely.
2. Adjust the planing depth. Refer to "Adjusting the Planing Depth" earlier in this manual.
3. Hold the depth adjustment knob/auxiliary handle with your left hand and the main handle with your right hand.

⚠ WARNING

Always use two hands on the tool for any operation; this assures that you maintain control and avoid risk of serious personal injury. Always properly support and clamp the work so that both hands are free to control the tool.

4. Place the front shoe on the edge of the workpiece to be planed.

NOTE: Make sure the blades are not touching the workpiece.

5. Apply pressure to the front handle so that the front shoe is completely flat on the workpiece.

6. Start the planer and let the motor reach maximum speed.
7. Hold the planer firmly and push it forward into the workpiece, using a slow, steady motion.
8. Apply downward pressure toward the rear handle as you reach the end of the planed cut. This helps keep the rear section of the planer base in contact with the workpiece and prevents the front of the planer from gouging the cut.

WARNING

Be careful to avoid hitting nails during planing operation; this action could nick, crack or damage blades.

NOTE: We suggest that you always keep an extra set of blades on hand. As soon as the blades in your planer show signs of becoming dull, replace them. The blades in your planer are reversible and can be reversed until both sides become dull.

CHAMFERING

See Figure 6.

The planer is designed with a chamfering groove in the front shoe to chamfer edges of boards as shown. Before making a cut on good timber, practice cutting on scrap lumber to determine the amount to be removed.

1. Clamp the workpiece securely.
2. Hold the front handle with your left hand and the rear handle with your right hand.
3. Place the chamfering groove on the surface to be cut.
4. Start the planer and let the motor reach maximum speed.
5. Hold the planer firmly and push it forward into the workpiece, using a slow, steady motion.
6. Apply downward pressure to keep your planer flat at the beginning and the end of the workpiece surface.

PLANING EDGES AND MAKING REBATE CUTS

The planer comes with an adjustable edge guide for precision edge planing and rebate cutting. Attach the edge guide to the planer for planing edges and attach the edge guide to the left side for making rebate cuts.

TO ATTACH THE EDGE GUIDE FOR PLANING EDGES

See Figure 7.

1. Unplug the tool.
2. Attach the bracket to the planer using the knob bolt.
3. Attach the edge guide to the bracket using the knob nut and the carriage head bolt.
4. Tighten the retaining knob securely.

TO PLANE EDGES

See Figure 8.

Follow the directions in the “Planing” section earlier in this manual. Hold the edge guide firmly against the edge of the work surface.

TO ATTACH THE EDGE GUIDE FOR MAKING REBATE CUTS

See Figure 9.

1. Unplug the tool.
2. Attach the bracket to the left side of the planer using the knob bolt.
3. Attach the edge guide loosely to the bracket using the knob nut and the carriage head bolt.
4. Adjust the edge guide to the desired width for the rebate cut.
5. Tighten the retaining knob securely.

TO MAKE REBATE CUTS

See Figure 9.

Follow the directions in the “Planing” section earlier in this manual. Hold the edge guide firmly against the edge of the work surface.

The depth of the rebate is determined by the depth of the cut and the number of passes made along the work surface. The maximum depth of the rebate cut is 8 mm (ERP6582RG / ERP6582) / 12 mm (ERP7582RG / ERP7582K) and has to be cut in 2.5 mm passes or less, to reach the desired depth. The width of the rebate cut is adjustable by moving the adge guide.

WARNING

Always wear safety goggles or safety glasses with side shields during power tool operation or when blowing dust. If operation is dusty, also wear a dust mask. Failure to do so could result in possible serious injury.

CLEANING THE DUST PORT AND EMPTYING THE DUST BAG

See Figure 10.

After using the planer for an extended period of time or when planing wet or green timber, chips may build-up in the dust port and require cleaning. Chip build-up restricts air flow and causes the motor to overheat.

Clean the dust port and empty the dust bag regularly.

1. Unplug the tool.

WARNING

Failure to unplug the tool could result in accidental starting causing possible serious injury.

2. Remove the dust bag from the dust port. Clean the chip or dust build-up from the dust port of your planer with a small piece of wood. Do not use your hands or fingers.
3. Empty all debris from the dust bag and ensure that the collar is free of debris.
4. Replace the dust bag.

LIVE TOOL INDICATOR

This tool features a live tool indicator which illuminates as soon as the tool is connected to the supply. This warns the user that the tool is connected and will operate when the switch is pressed.

MAINTENANCE

⚠ WARNING

When servicing, use only identical Ryobi replacement parts. Use of any other parts may create a hazard or cause product damage.

GENERAL

All parts represent an important part of the double insulation system and should be serviced only at an authorised service centre.

Avoid using solvents when cleaning plastic parts. Most plastics are susceptible to various types of commercial solvents and may be damaged by their use. Use clean cloths to remove dirt, carbon dust, etc.

⚠ WARNING

Do not at any time let brake fluids, gasoline, petroleum-based products, penetrating oils, etc., come in contact with plastic parts. They contain chemicals that can damage, weaken or destroy plastic.

Electric tools used on fiberglass material, wallboard, spackling compounds, or plaster are subject to accelerated wear and possible premature failure because the fiberglass chips and grindings are highly abrasive to bearings, brushes, commutators, etc. Consequently, we do not recommend using this tool for extended work on these types of materials. However, if you do work with any of these materials, it is extremely important to clean the tool using compressed air.

LUBRICATION

All of the bearings in this tool are lubricated with a sufficient amount of high grade lubricant for the life of the unit under normal operating conditions. Therefore, no further lubrication is required.

REPLACING BLADES

See Figure 11, 12 and 13.

The blades in your planer are reversible. Therefore, you can reverse the blades when one edge becomes dull.

Always replace or reverse blades in pairs. Do not attempt to sharpen blades. If the blades become dull, replace them.

When replacing the blades, use recommended replacement blade only.

⚠ WARNING

Blades are sharp, use extreme caution when replacing the blades. Failure to heed this warning can result in serious personal injury.

1. Unplug the tool.

⚠ WARNING

Failure to unplug the planer could result in accidental starting causing serious injury.

2. Secure the planer in an upside down position.
3. Loosen the three screws securing the blade on the blade holder using the blade wrench provided.

NOTE: Do not over-loosen the screws. If screws are too loose, alignment of the new blade will not be accurate.

NOTE: Before removing the old blades, take notice of the direction of cut as well as how the tapered edge of the old blades are oriented. The tapered edge of the new blades must be in the same orientation as the original blades.

4. Push the blade (to the right) out of the blade holder using the tip of a screwdriver.
5. Remove the old blade from the blade holder.

NOTE: If the blade cannot be easily pushed out of the blade holder after loosening blade securing screws, use a block of wood to break the blade loose from the blade holder, with a short sharp blow. Then push the blade with a screwdriver to remove. If necessary, tap the block of wood sharply with a small hammer to break the blade loose.

6. Clean any sawdust or wood chips from around the blade area.
7. Slide the new blade into the slot of the blade holder.
8. Use a screwdriver to push the blade into the blade holder until it is centered into position.
9. Retighten the three blade securing screws using the blade wrench.
10. Repeat the above procedure to change the other blade.

REPLACING THE BELT

See Figure 14 and 15.

When replacing the belt, use the recommended replacement belt only.

1. Unplug the tool.

⚠ WARNING

Failure to unplug the tool could result in accidental starting causing possible serious injury.

2. Remove belt cover screws.
3. Remove the belt cover.
4. Force the old belt from the small pulley by turning in the direction shown. As you turn the belt, pull and work it off the small pulley until it has been completely

removed from both pulleys.

5. Install the new belt over the large pulley. As you turn the belt, push and work it onto the small pulley until it is in place.
6. Replace the belt cover.
7. Install belt cover screws and tighten securely, but do not overtighten.

NOTE: Do not overtighten the screws.

After use, check the tool to make sure that it is in good condition. It is recommended that you take this tool to a RYOBI Authorised Service Centre for a thorough cleaning and lubrication at least once a year.

Do not make any adjustments while the motor is in motion.

Always disconnect the power cord from the power supply before changing removable or consumable parts (blade), before lubricating or working on the unit.

If the supply cord is damaged, it shall be replaced by the manufacturer or its service centre or similar qualified person in order to avoid a hazard.

⚠ WARNING

To ensure safety and reliability, all repairs should be performed by an authorised service centre or other qualified service organisation.

Techtronic Industries (Australia) Pty. Ltd.
Level 1, 660 Doncaster Road
Doncaster, VIC 3108, Australia

Techtronic Industries New Zealand Ltd.
18-26 Amelia Earhart Avenue
Mangere, Auckland 2022, New Zealand